

Make the most of waste



An English language teaching resource
about recycling in Auckland
Level 2-3

Recycling:

Yes please and no thanks

This English learning module has two aims. It is going to teach you how to recycle correctly in Auckland. It is also going to help you learn some English so you can understand and talk about rubbish and recycling in Auckland. This module uses the Auckland Council flyer 'Recycling made easy'.

.....



Introduction: Speaking

Talk about these questions.

- What day is your rubbish day?
- How often does your recycling get collected? What day?
- Is your rubbish collected in a bag or a bin? What about your recycling?
- What are the man and boy doing in the picture?
- What happens to the plastic milk bottles after you put them in the recycling bin?
- What do you think they are made into?

To help you understand more about recycling, watch a video on YouTube about the recycling process. Search term 'plastic recycling process'.

After you watch the video, talk about these questions.

- Were your ideas about recycling plastic correct?
- What did you learn about recycling?
- What products do you know that are made from recycled materials?



Recycling:

Can it go into the recycling?

Vocabulary: Household items 1

Work in pairs or small groups. Match the pictures of household items, provided by your teacher, with the word cards.

Speaking: Household items 1

Work in pairs or small groups. Use the 'Yes please' and 'No thanks' sorting sheets. Put household packaging that can go into the recycling on the 'Yes please' page. Put household packaging that can't go into the recycling onto the 'No thanks' page. Look at the 'Useful language' box for questions and comments to help your conversation.

Are the items sorted correctly? Read the 'Yes please, no thanks' side of the 'Recycling made easy' flyer. Change any of the items that are in the wrong place. Talk about the correct answers with a partner.

- Is there anything that surprised you?
- What is different from what you usually put in the rubbish and recycling at home?
- What will you do differently in future?

.....

Homework:

Complete Packaging Vocabulary Homework on pages 11-12.

Useful language:

Questions:

- Can this be recycled?
- Do you put this in the rubbish or recycling?
- What do you do with this?

Comments:

- I think this is recycling.
- I think that's rubbish.
- I don't think this can be recycled.
- It might be recycling.
- I'm not really sure.



This part includes reading and vocabulary using the the Auckland Council flyer 'Recycling made easy'.

.....

Vocabulary: Household items 2

What are these household items made of? Write the items in the correct list. Use the pictures on the 'Yes please' and 'No thanks' flyer to help you.

egg carton

ice-cream container

tin can

milk bottle

newspaper

bottle top

drink can

shampoo bottle

wine bottle

jam jar

mirror

water bottle

Plastic	Metal	Paper	Cardboard	Glass

Add 2 more items from home or your classroom to each list.

Reading: 'Recycling made easy'

Turn over the flyer to the page with the title 'Recycling made easy'. Read the page quickly. Choose the correct answer.

This page is about:

- a. how to recycle plastic into clothes
- b. why you can't recycle plastic bags
- c. how to recycle correctly

Vocabulary:

Match the word to the picture.

1. kitchen (n)

a.



2. sorting machine (n)

b.



3. squash (v)

c.



4. carton (n)

d.



5. rinse (v)

e.



6. container (n)

f.



7. tetra pak (n)

g.



Don't put plastic bags in the recycling collection. They get caught in the sorting machines. Plastic bags are not currently accepted in the kerbside recycling collection. Instead of using plastic bags, take a reusable bag to the shops.



A conveyor belt on a sorting machine.



Plastic bags caught in a conveyor belt.

Reading: 'Recycling made easy'

Read the page 'Recycling made easy' again. Mark the statements True (T) or False (F).

1. Plastic bags can go in the recycling bin.
 2. Shampoo bottles should be rinsed, squashed and put into the recycling bin.
 3. You can put an empty and clean five litre cooking oil bottle in the recycling bin.
 4. Take the lids off milk bottles and throw them in the rubbish.
 5. You can't recycle tetra paks in west Auckland.
 6. You can check your collection dates and get more information about recycling at the website makethemostofwaste.co.nz.
-



Take a reusable bag when you go shopping.

Optional Tasks: Recycling at home and in the community

Task 1: Make a poster or classroom wall display about recycling in Auckland.
Some ideas for the display or poster:

- Use packaging materials on the display. Label the packaging and materials.
- Say what can be recycled and what can't.
- Explain how to recycle things correctly.
- Write a short paragraph about why recycling is important.

Task 2: 'Recycling is easy'

Take home a 'Recycling is easy' page in English or your home language. Talk to the people you live with about recycling in Auckland. Talk about why recycling is important and what you can do at home to improve your recycling habits.

Talk to the class tomorrow about your family's or flatmates' responses and what changes you are going to make at home.

You can also talk to people in your community, such as at work, at church, at the temple or at the mosque.

Present your poster or display to other students, at home or to people in your community.



You can find the 'Recycling is easy' flyer in English and seven other languages under the heading 'Quick guide to recycling – translations', under 'Recycling guides' at makethemostofwaste.co.nz

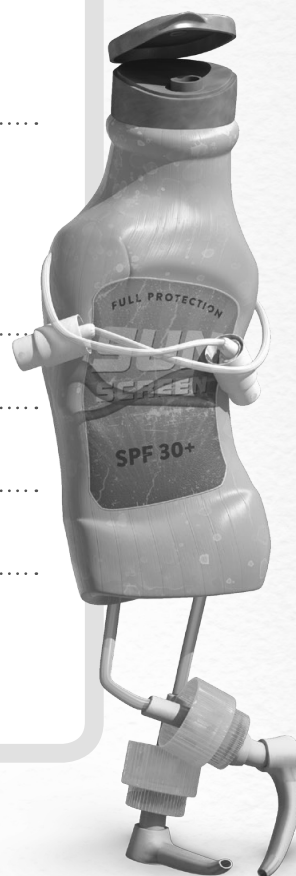


Recycling made easy

- You can recycle packaging from the kitchen, bathroom and laundry.
- Please don't put plastic bags in your Auckland Council recycling bin – they get caught in the sorting machines.
- Use our recycling search at makethemostofwaste.co.nz

Please:

- rinse and squash all containers.
- leave the lids on all bottles and containers.
- containers should be no larger than 4 litres.
- Tetra Pak cartons are NOT accepted in North Shore and Waitākere.



Remember, rubbish is collected weekly and recycling fortnightly.
Check your collection dates at makethemostofwaste.co.nz

MAKE THE MOST OF WASTE
.CO.NZ

Auckland Council
Te Kaunihera o Tāmaki Makaurau



✓ Yes please

These items can go into recycling



✓ plastic bottles



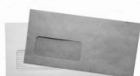
✓ plastic bottles from the bathroom and laundry



✓ plastic containers



✓ clear plastic food containers



✓ advertising mail and envelopes



✓ egg cartons



✓ newspapers and magazines



✓ paper and cardboard packaging



✓ glass bottles and jars



✓ aluminium cans



✓ steel and tin cans



✓ empty aerosols



✗ No thanks

These items can't go into recycling



✗ plastic bags (full or empty)



✗ food and garden waste



✗ hazardous waste and chemicals



✗ polystyrene meat trays and packaging



✗ all types of batteries



✗ nappies



✗ clothing, shoes and textiles



✗ window glass, mirror glass and lightbulbs



✗ cookware, Pyrex and drinking glasses



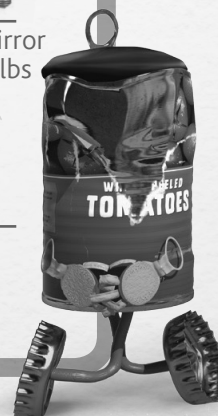
✗ electronic and electrical items



✗ building waste



✗ medical



Packaging Vocabulary Homework

Name the household items:



a. _____



b. _____



c. _____



d. _____



e. _____



f. _____



g. _____



h. _____



i. _____



j. _____

Items:

- polystyrene tray
- egg carton
- ice-cream container
- plastic bags
- tin cans
- milk bottle
- newspapers
- drink can
- shampoo bottle
- glass bottles and jars.

Packaging Vocabulary Homework

Write the packaging word in the spaces to complete the puzzle.
Use the words from the previous page.

_____R

_____E_

_____C_____

_____Y

_____C

_____L_

_____I_

_____N

_____G

Acknowledgments

The research, design and preparation of this resource was a collaboration between Stefanie O'Brien and Auckland Council.
©Auckland Council 2015

MAKE THE MOST OF WASTE
.co.nz

